

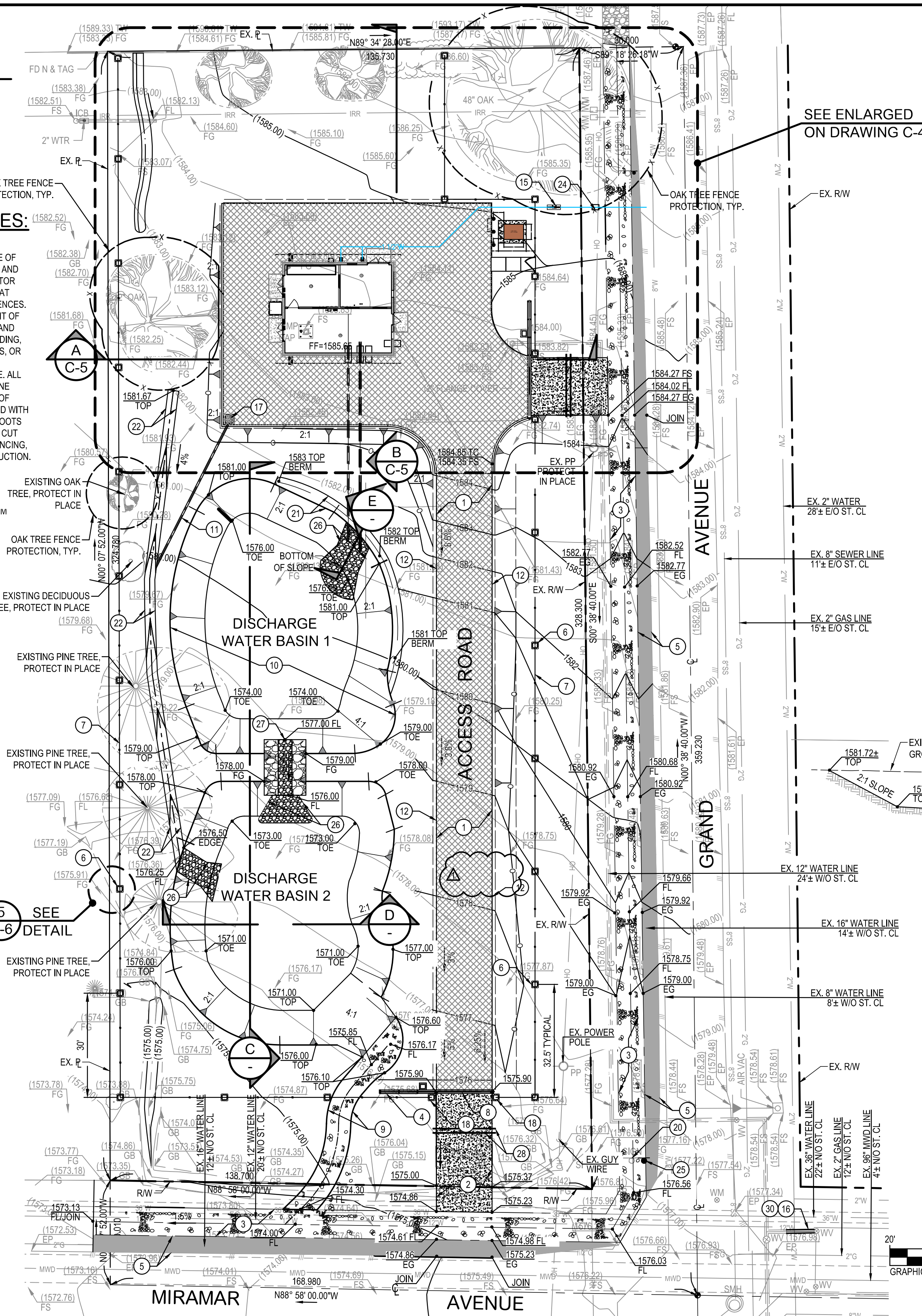
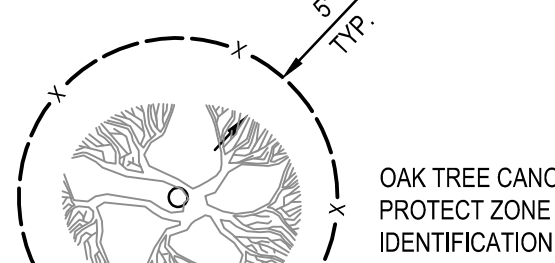
**OAK TREE FENCING NOTES:**

- NO GRADING OR CONSTRUCTION SHALL OCCUR WITHIN THE PROTECTED ZONE OF ANY OAK TREE AS REQUIRED PER THE CITY OF CLAREMONT ZONING CODE. THE PROTECTED ZONE SHALL MEAN THAT AREA WITHIN THE DRIP LINE OF AN OAK TREE EXTENDING THERE FROM A POINT AT LEAST FIVE FEET OUTSIDE THE DRIP LINE, OR 15 FEET FROM THE TRUNK(S) OF A TREE, WHICHEVER IS GREATER. ALL TREE PROTECTION FENCING MUST BE IN PLACE AND APPROVED BY TVMWD PRIOR TO START OF DEMOLITION OR GRADING WORK.

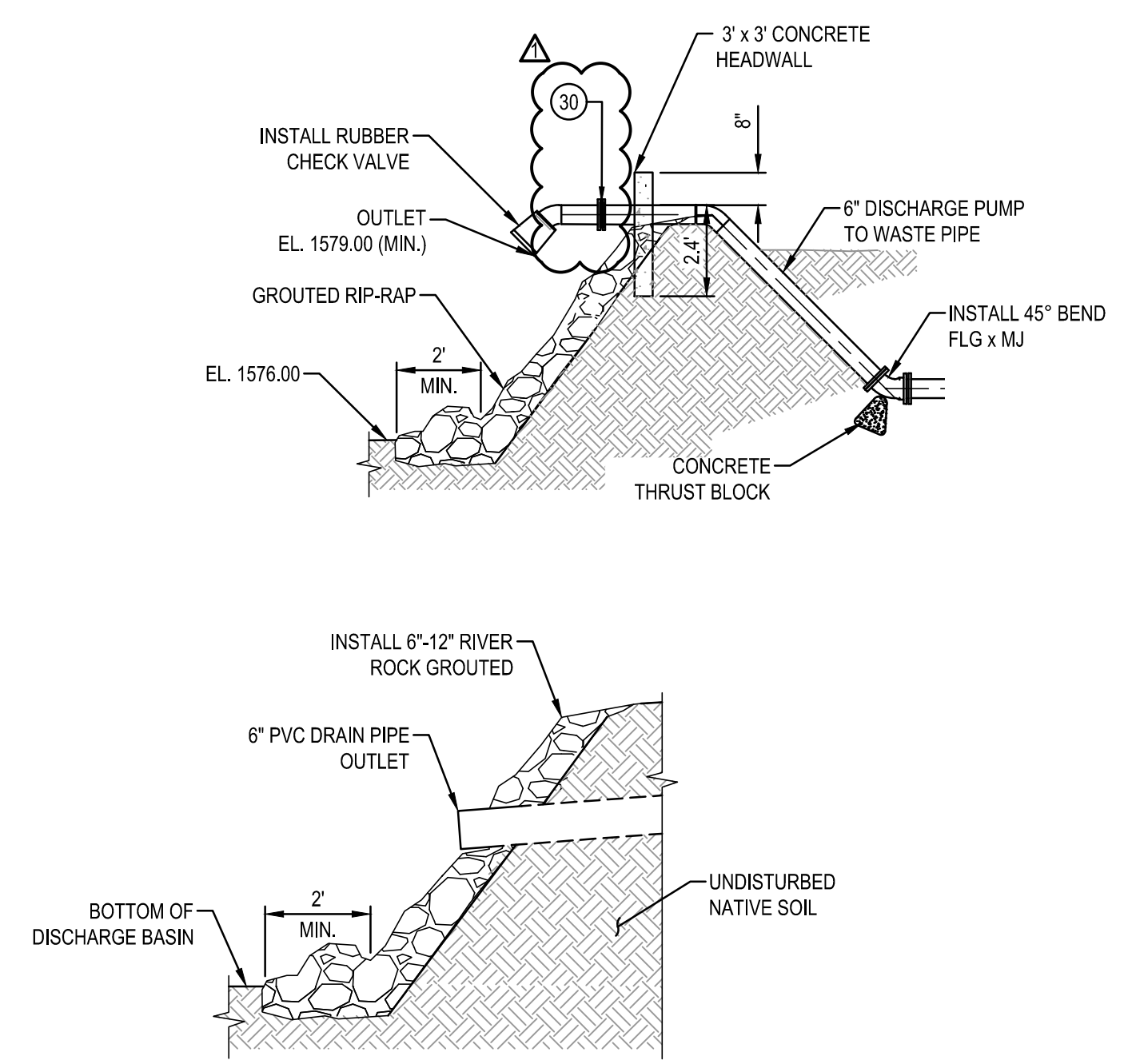
**OAK TREE PROTECTION NOTES:**

- ALL EXISTING OAK TREES SHALL BE PROTECTED BY A 5' HIGH CHAIN LINK FENCE PLACED AT THE DRIP LINE WHERE FEASIBLE OF THE CANOPY PRIOR TO COMMENCEMENT OF ANY DEMOLITION AND CONSTRUCTION, UNLESS OTHERWISE TVMWD. THE CONTRACTOR SHALL PROTECT AND OBSERVE CONSTRUCTION OPERATIONS AT CRITICAL TIMES AND CONFIRM PLACEMENT OF PROTECTIVE FENCES. ANY DEVIATION REGARDING THE PLACEMENT, TYPE, OR HEIGHT OF THE FENCING SHALL BE SPECIFICALLY APPROVED BY TVMWD AND THE CITY OF CLAREMONT. HARDSCAPE CONSTRUCTION, GRADING, COMPACTION, TRENCHING, STORAGE OF MATERIALS, VEHICLES, OR DEBRIS, OR WASHING OF CHEMICALS OR EQUIPMENT IS NOT ALLOWED WITHIN THE FENCED AREA (TREE PROTECTION ZONE). ALL DEMOLITION AND GRADING WITHIN THE TREE PROTECTION ZONE SHALL BE DONE WITH HAND TOOLS UNDER THE SUPERVISION OF TVMWD. ALL NECESSARY TRENCHING SHALL BE DONE BY HAND WITH PNEUMATIC OR HYDRAULIC SOIL EXCAVATION TOOLS. TREE ROOTS AND BRANCHES LARGER THAN 1-1/2" DIAMETER SHALL NOT BE CUT WITHOUT PRIOR APPROVAL. THESE MEASURES, INCLUDING FENCING, MUST BE CONTINUOUSLY MAINTAINED THROUGHOUT CONSTRUCTION.
- PROTECTION FENCE FOR OAK TREES AND OTHER SPECIES THY REMAIN ON SITE, THE PROTECTIVE FENCE SHALL NOT BE REMOVE OR DISTURBED WITHOUT SPECIFIC PERMISSION FROM THE PROJECT ARBORIST.
- "NO GRADING OR DISTURBANCE OF SOIL IS ALLOWED IN ROOT ZONE OF EXISTING TREES TO REMAIN."
- REFER TO DRAWING C-4 FOR ADDITIONAL GENERAL OAK TREE PROTECTION DURING CONSTRUCTION AND BEYOND.

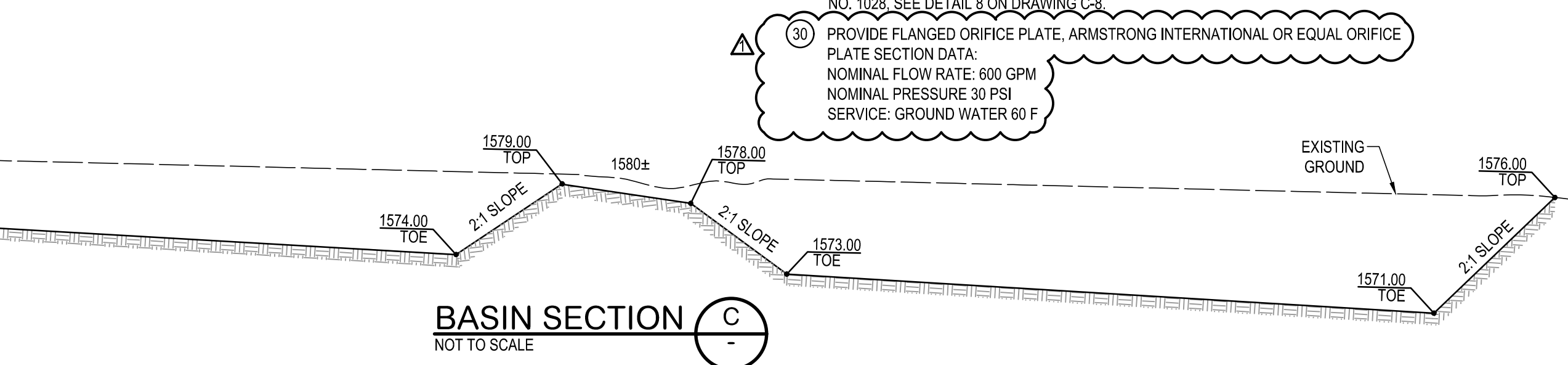
**LEGEND:**



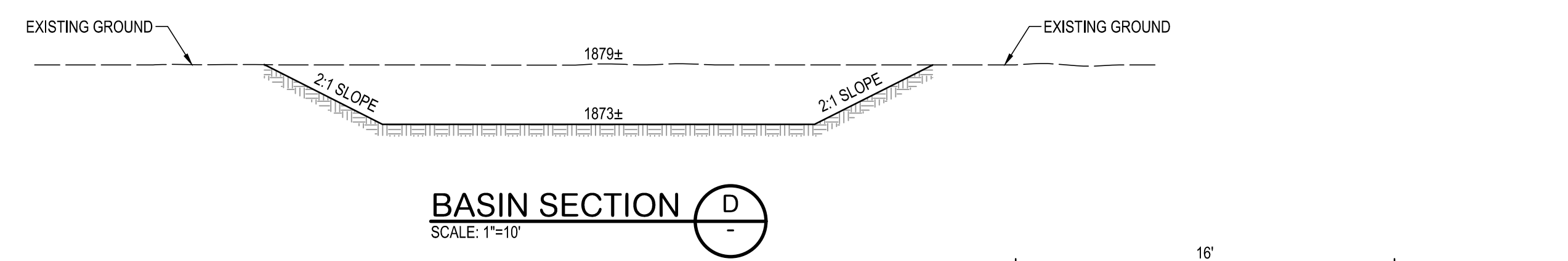
SEE ENLARGED ON DRAWING C-4



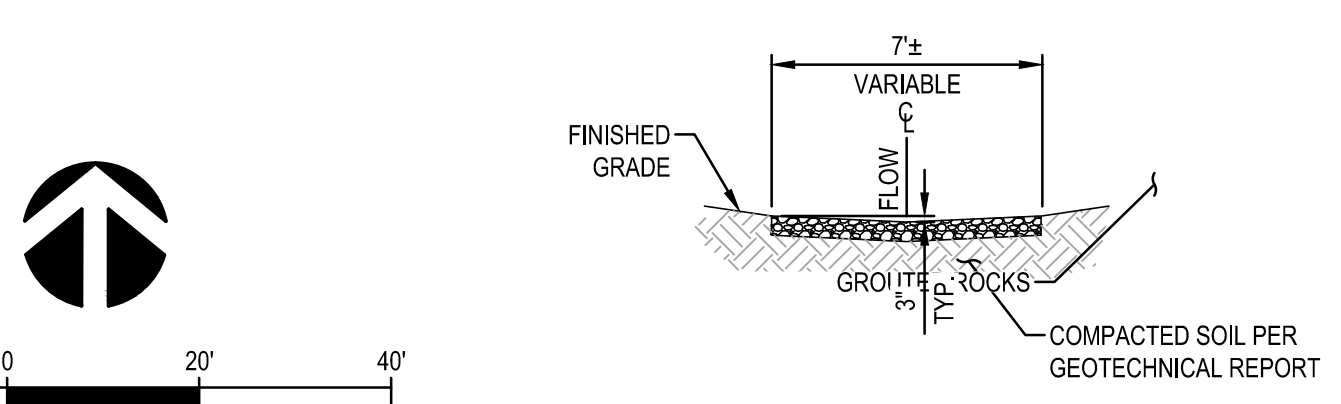
**GRouted RIP-RAP SECTION E**  
NOT TO SCALE



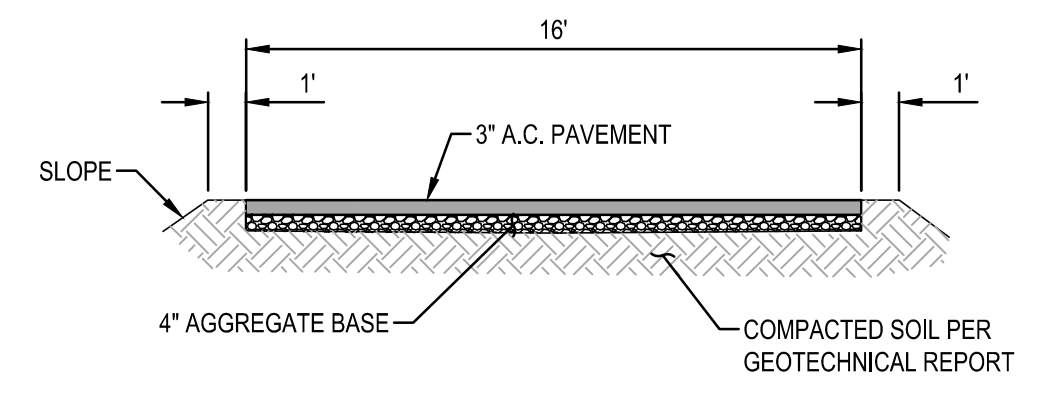
**BASIN SECTION C**  
NOT TO SCALE



**BASIN SECTION D**  
SCALE: 1"=10'



**GRouted SWALE G**  
NOT TO SCALE



**ACCESS ROAD SECTION F**  
NOT TO SCALE

**CONSTRUCTION NOTES:**

- CONSTRUCT 3" A.C. OVER 4" AGGREGATE BASE. SEE SECTION 3 ON DRAWING C-8 AND PER GEOTECHNICAL REPORT.
- CONSTRUCT P.C.C. DRIVEWAY APPROACH. SEE DETAIL 7 ON DRAWING C-8.
- CONSTRUCT 4"-6" GRouted ROCK SWALE PER CITY OF CLAREMONT STANDARD DRAWING 1046 AND 1047. SEE DETAIL 5 ON DRAWING C-8.
- CONSTRUCT 8" P.C.C. ROLL GATE GUIDE FOOTING PER SECTION C ON DRAWING C-5.
- CONSTRUCT A.C. PAVEMENT 4" MINIMUM OVER AGGREGATE BASE PER CITY OF CLAREMONT STANDARD DRAWING NO. 1047.
- CONSTRUCT 24" x 24" FIELD STONE PILASTER. SEE DETAIL 4 AND 5 ON DRAWING C-5.
- INSTALL 7" HIGH WROUGHT IRON FENCE PER DETAIL 1 ON DRAWING C-6.
- INSTALL 7" HIGH WROUGHT IRON GATE PER DETAIL 1 ON DRAWING C-6.
- CONSTRUCT VARIABLE WIDTH GRouted ROCK SWALE. SEE SECTION G HEREON.
- CONSTRUCT VARIABLE WIDTH AND DEPTH RETENTION BASIN.
- INSTALL 6" DIAMETER PVC DRAIN PIPE, SDR 35.
- INSTALL REDWOOD HEADER PER SECTION 1 ON DRAWING C-8.
- INSTALL 6" DIAMETER STEEL BOLLARD PER DETAIL 2 ON DRAWING C-8.
- CONSTRUCT 8' x 6.5' CONCRETE SLAB PER STRUCTURAL PLANS.
- INSTALL 2" BACKFLOW PRINCIPAL AND GUARD SHACK PER DETAIL 5 ON DRAWING M-5.
- CONSTRUCT 8 LF OF 12" C-150 CL 350 DIP. CONNECT TO EXISTING 12" STUB-OUT.
- INSTALL 24" x 24" DROP INLET WITH STANDARD FLOGARD FILTER MODEL FGP-24F. SEE DETAIL 6 ON DRAWING C-8.
- CONSTRUCT 24" x 24" STONE PILASTER. SEE DETAIL 4 ON DRAWING C-5.
- CONSTRUCT 6" P.C.C. CURB PER CITY OF CLAREMONT STANDARD DRAWING NO. 1052. SEE DETAIL 4 ON DRAWING C-8.
- RELOCATE EXISTING STREET SIGN AS SHOWN.
- CONSTRUCT 4" WIDE NATIVE SOIL BERM. SEE DETAIL E ON DRAWING C-4.
- CONSTRUCT 3" WIDE NATIVE SOIL WITH ROCKS CHANNEL.
- CONSTRUCT 4" THICK P.C.C. SIDEWALK.
- NEW WATER SERVICE, METER AND BOX.
- INSTALL STREET SIGN PER CITY OF CLAREMONT STANDARD DRAWING NO. 1062.
- CONSTRUCT 5' x 5' GRouted ROCKS RIP-RAP, MINIMUM ROCK SIZE 12"-6". SEE SECTION E HEREON.
- CONSTRUCT 3" WIDE GRouted ROCK OVERFLOW CHANNEL. MINIMUM ROCK SIZE 12"-6".
- INSTALL 2 (3") PVC CONDUIT FOR IRRIGATION AND ELECTRICAL.
- CONSTRUCT A.C. PAVEMENT REPAIR PER CITY OF CLAREMONT STANDARD DRAWING NO. 1028. SEE DETAIL 8 ON DRAWING C-8.

30 PROVIDE FLANGED ORIFICE PLATE, ARMSTRONG INTERNATIONAL OR EQUAL ORIFICE PLATE SECTION DATA:  
NOMINAL FLOW RATE: 600 GPM  
NOMINAL PRESSURE: 30 PSI  
SERVICE: GROUND WATER 60 F

X:\2020\20200505-00-TVMWD-MIRAGRAND WELL EQUIPPING\DWG\SHEETS\20200505-00-SHT OF C-3 GRADING PLAN.DWG (05-19-21 10:35:14AM)

**1-800-422-4133**  
**DIG ALERT**

PLAY IT SAFE. DIAL BEFORE YOU DIG!

UNDERGROUND SERVICE ALERT

AT LEAST TWO WORKING DAYS PRIOR TO EXCAVATING

REV	DESCRIPTION	ENGR	DATE	APPD	DATE



PLANS PREPARED BY:  
**CIVILTEC engineering inc.**

General Civil, Municipal, Water and Wastewater Engineering, Planning, Construction Management and Surveying

118 West Lime Avenue  
Monrovia, Ca. 91016  
Phone: (626) 357-0588  
Fax: (626) 303-7957

DESIGNED BY: CSH  
DRAWN BY: JM / MM / JG

CHECKED BY: CSH  
DATE: APRIL 2021

SCALE: AS SHOWN

FILE NO.:

**THREE VALLEYS MUNICIPAL WATER DISTRICT**  
1021 E. MIRAMAR AVENUE  
CLAREMONT, CA 91711  
(909) 621-5568

**THREE VALLEYS MUNICIPAL WATER DISTRICT**  
**MIRAGRAND WELL EQUIPPING IMPROVEMENTS**  
**GRADING PLAN**

PROJECT NO. **58463**  
DRAWING NO. **C-3**  
SHEETS NO. **7** OF **49**