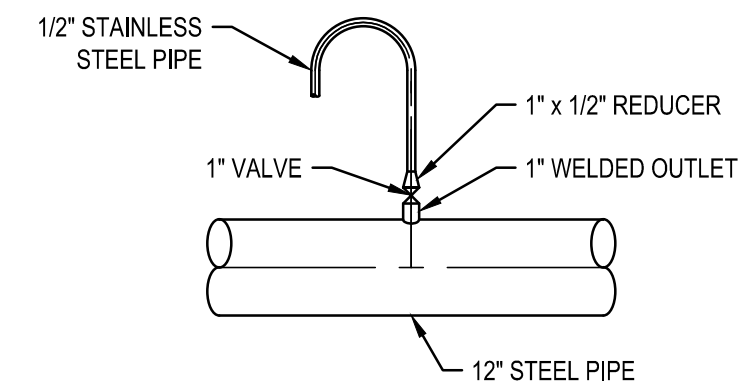


- (A) 2" Y-STRAINER
- (B) 2" THREADED NIPPLE, LENGTH AS REQUIRED TO CLEAR FLANGES (BRASS)
- (C) 2" ELBOW (BRASS)
- (D) 2" PIPE NIPPLE, LENGTH AS REQUIRED (BRASS)
- (E) ADJUSTABLE STEEL SUPPORT
- (F) 2" UNION (BRASS)
- (G) 2" BRASS BALL VALVE
- (H) 2" REDUCED PRESSURE BACKFLOW PREVENTION ASSEMBLY, FEBCO MODEL 860, O.A.E.

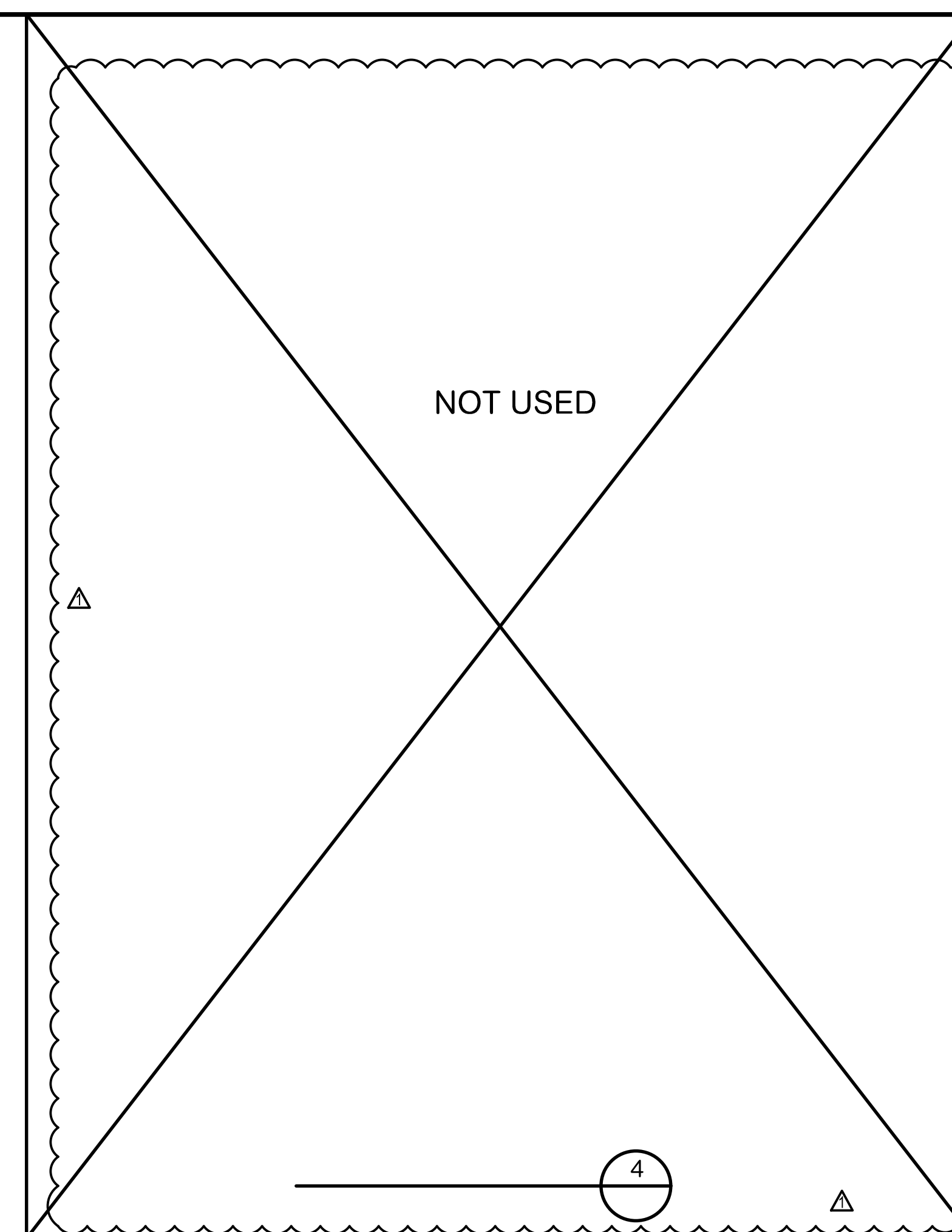
**BACKFLOW PREVENTER** ①  
NOT TO SCALE C-3



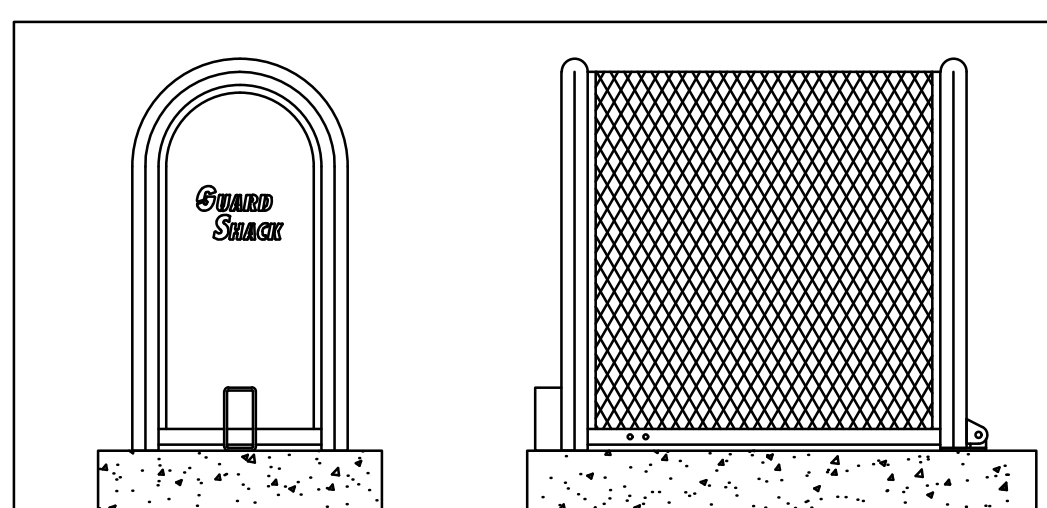
**UBS UTILITY SINK** ②  
NOT TO SCALE M-1



**WATER SAMPLE DETAIL** ③  
SCALE: 1"=1'-0"



④



**STANDARD GUARDSHACK™ AND COAST GUARDSHACK™ SIZES INTERNAL DIMENSIONS**

GS - 3	10" W x 24" H x 40" L	HINGED
GS - 4	16" W x 30" H x 46" L	HINGED

For 304 S. S. , order as CGS using same model #

**POWDERCOATED UNITS**

Pre-powdercoat Treatment Process  
Clean GuardShack™ unit with a S-44 alkaline cleaner, overflow rinse, apply an AC-8115 iron phosphate treatment, overflow rinse and finish with a #198 sealer rinse to prevent rusting and improve adhesion.

Powdercoat Treatment Process  
Units shall be preheated and coated by electrostatic application of 2.0 to 3.5 mil thickness on all surfaces. Powder shall be RAL 1019 Woodlands Tan or TOI 8810-6058 Forest Green or approved equal Impact Resistance Finish 160 inch pounds direct 160 inch pounds reverse, per ASTM D-2794 specs. Gloss Finish >85, per ASTM D-523. Adhesion to be rated excellent when tested to ASTM D-3359 standards.

**STAINLESS STEEL ELECTRO-POLISH FINISH**

Only pipe  
All 304 Stainless Steel units shall be chemically electro-polished to impart a lustrous finish to the unit.

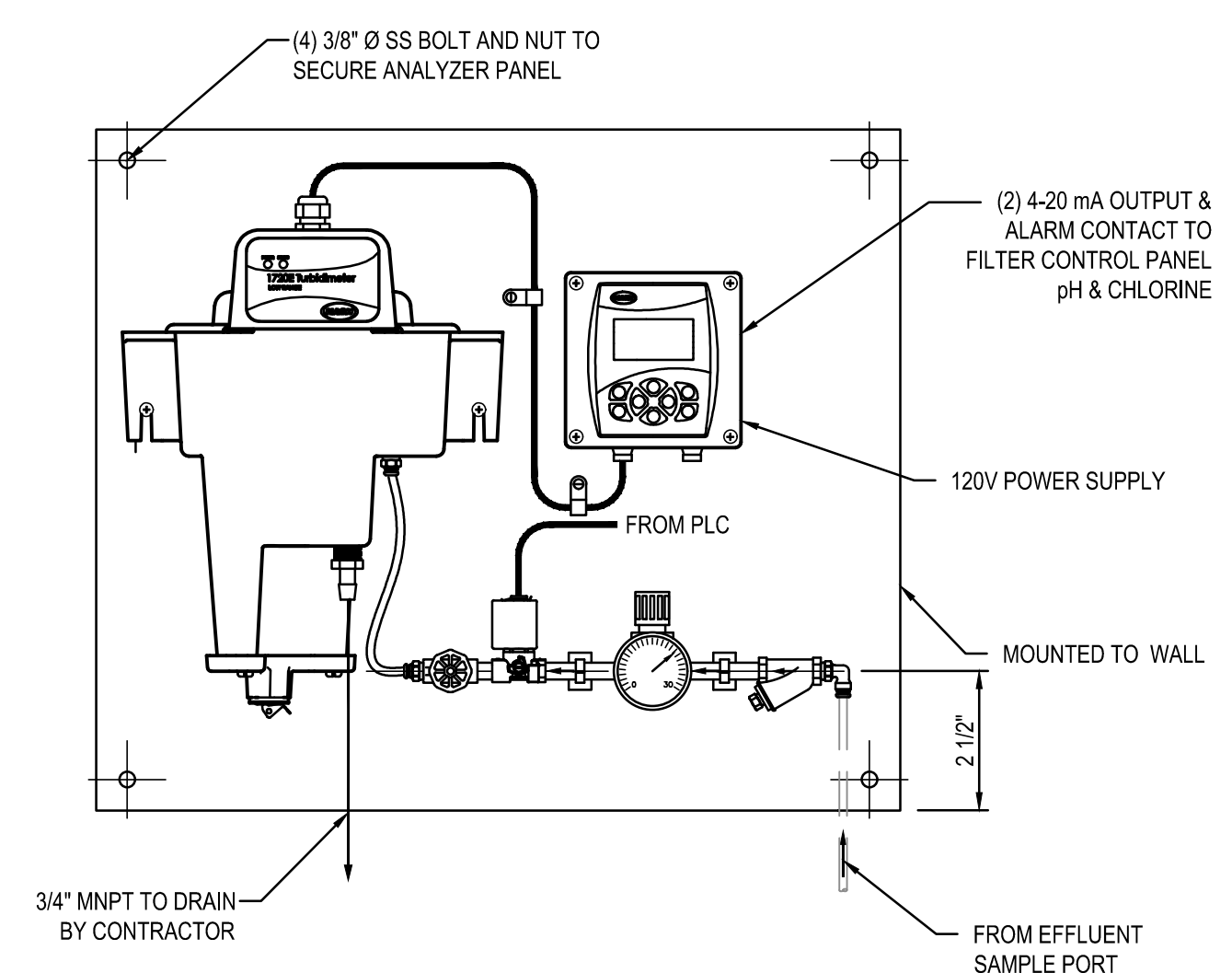
- GUARDSHACK™ GENERAL SPECIFICATIONS**
- All pipe shall be 1 1/2" schedule 40 A.S.T.M. A-53 Grade A- Electric Weld pipe.
  - Angle Iron shall be 1" x 1" x 1/8" steel.
  - Stainless steel units shall be 1 1/2" schedule 10 A.S.T.M. A-312 304 S.S.
  - Expanded metal shall be 7/8" spacing x # 13 Ga. flattened diamond pattern steel.
  - All hinges shall have hidden/internal mounting points.
  - All stainless steel shall be sandblasted after fabrication to remove burrs, flashing and sharp edges.
  - There shall be no exposed ends of expanded metal on the outside of the enclosure.
  - Welding shall be a minimum of 1/4" long welds on 4" spacing.
  - One Lock Shield Bracket on hinged units shall be welded on end opposite hinges.
  - Hardware kits provided for mounting enclosures.
  - On 304 S.S. units, all hinges, exposed hardware, and brackets shall be 304 S.S.
  - All hardware shall be securely attached to enclosures. See HK-200 for hardware specifications.
  - All enclosures shall withstand a minimum of 200 lbs. per square foot without any permanent deflection or distortion.
  - 3/8" spacing between angle iron framework of enclosure and slab to prevent rusting.

BPDI-GuardShack Enclosures  
3831 E. GROVE STREET  
PHOENIX, ARIZONA 85040 (602) 426-1002

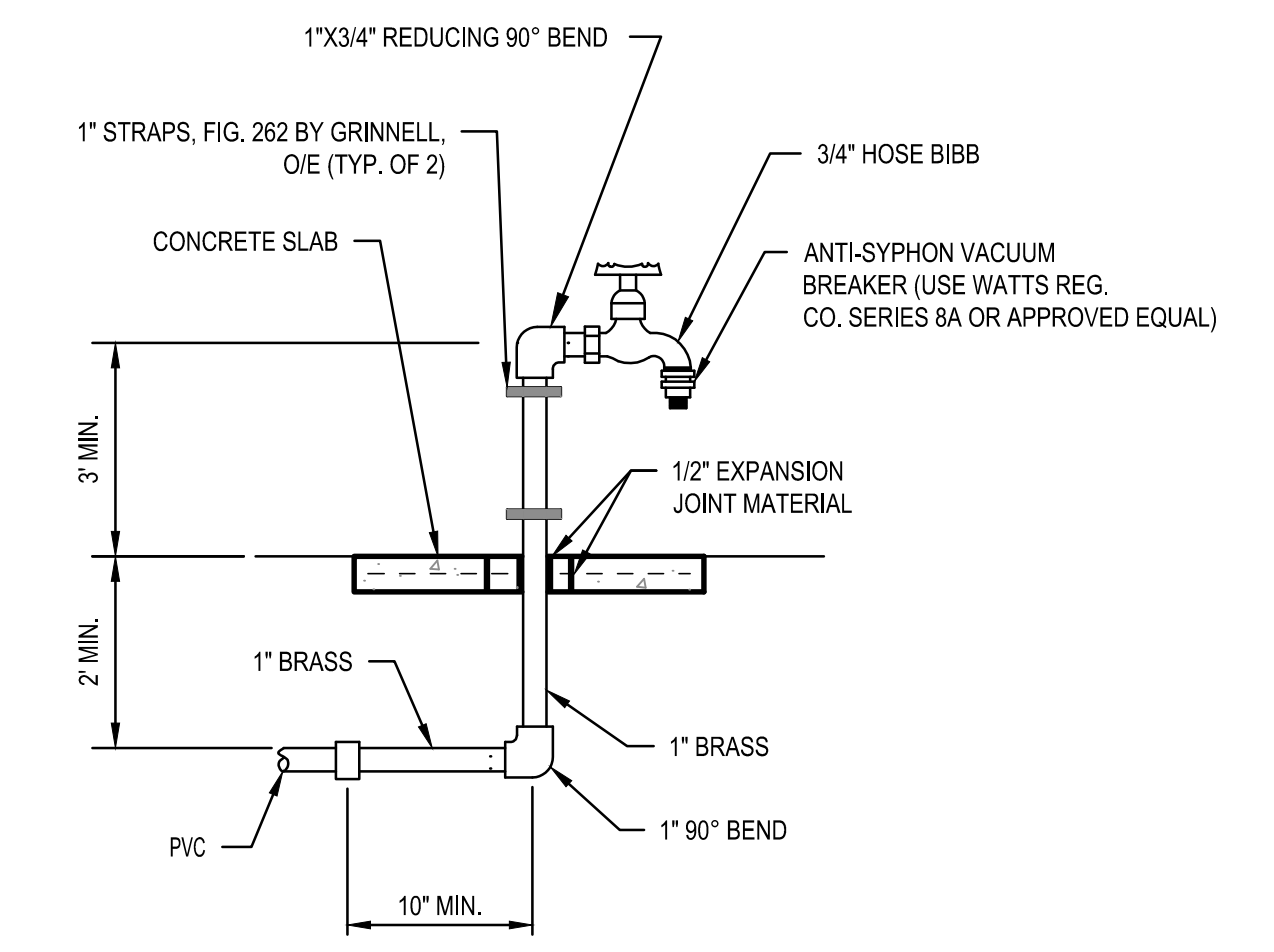
GENERAL SPECIFICATIONS FOR  
STANDARD GUARDSHACK™ ENCLOSURES

SCALE:NTS  
DETAIL NO.  
BPDI-Hinged  
REV. 0

**GUARD SHACK** ⑤  
NOT TO SCALE C-2



**HACH tu500sc TURBIDITY ANALYZER** ⑥  
NOT TO SCALE



**HOSE BIBB AND PIPING(FUTURE)** ⑦  
NOT TO SCALE



AT LEAST TWO WORKING DAYS PRIOR TO EXCAVATING

REV	DESCRIPTION	ENGR	DATE	APPD	DATE



PLANS PREPARED BY: *General Civil, Municipal, Water and Wastewater Engineering, Planning, Construction Management and Surveying*

**CIVILTEC engineering inc.**  
118 West Lime Avenue  
Monrovia, Ca. 91016  
Phone: (626) 357-0588  
Fax: (626) 303-7957

**THREE VALLEYS MUNICIPAL WATER DISTRICT**  
1021 E. MIRAMAR AVENUE  
CLAREMONT, CA 91711  
(909) 621-5568

DESIGNED BY: CSH CHECKED BY: CSH SCALE: AS SHOWN FILE NO.  
DRAWN BY: JM/MM/JG DATE: APRIL 2021

THREE VALLEYS MUNICIPAL WATER DISTRICT  
MIRAGRAND WELL EQUIPPING IMPROVEMENTS  
MECHANICAL DETAILS

PROJECT NO. 58463  
DRAWING NO. M-5  
SHEETS NO. 17 OF 49

X:\2020\2020156-00-IRWMB-MIRAGRAND WELL EQUIPPING IMPROVEMENTS\DWG\SHEETS\2020156-00\_SHT 17 M-5 MECH.DETLS.DWG (05-19-21 9:42:22AM)