

WELCOME TO THREE VALLEYS MWD



MIRAGRAND WELL PROJECT

Will enable TVMWD to enhance the use of reliable, less expensive, local water resources over the long-term in a sustainable manner and reduce the need for imported water.

WORKSHOP GOALS

- District site usage – water well
- District will provide updated information on conceptual renderings
- Obtain feedback from residents on updated renderings

Conceptual Design Elements



Historic Fieldstone Well Pump House –
Baseline & Padua

Conceptual Design Elements



Historic Fieldstone Well Pump House –
Baseline & Padua

Rural Site Improvements



DG Pathways & Rock Swale

Drought Tolerant Landscaping



Rural Site Improvements



Fencing with Landscaping

Landscaping Concepts



Lemon Trees

Landscaping Concepts

A row of lush green orange trees, heavily laden with ripe, bright orange fruit, stretches across the middle ground. The trees are planted in a landscape featuring a gravel path covered in fallen orange leaves. Large, smooth, light-colored rocks are scattered along the base of the trees and in the foreground. In the background, there are taller trees, including a palm tree, and a house with a red-tiled roof under a clear blue sky.

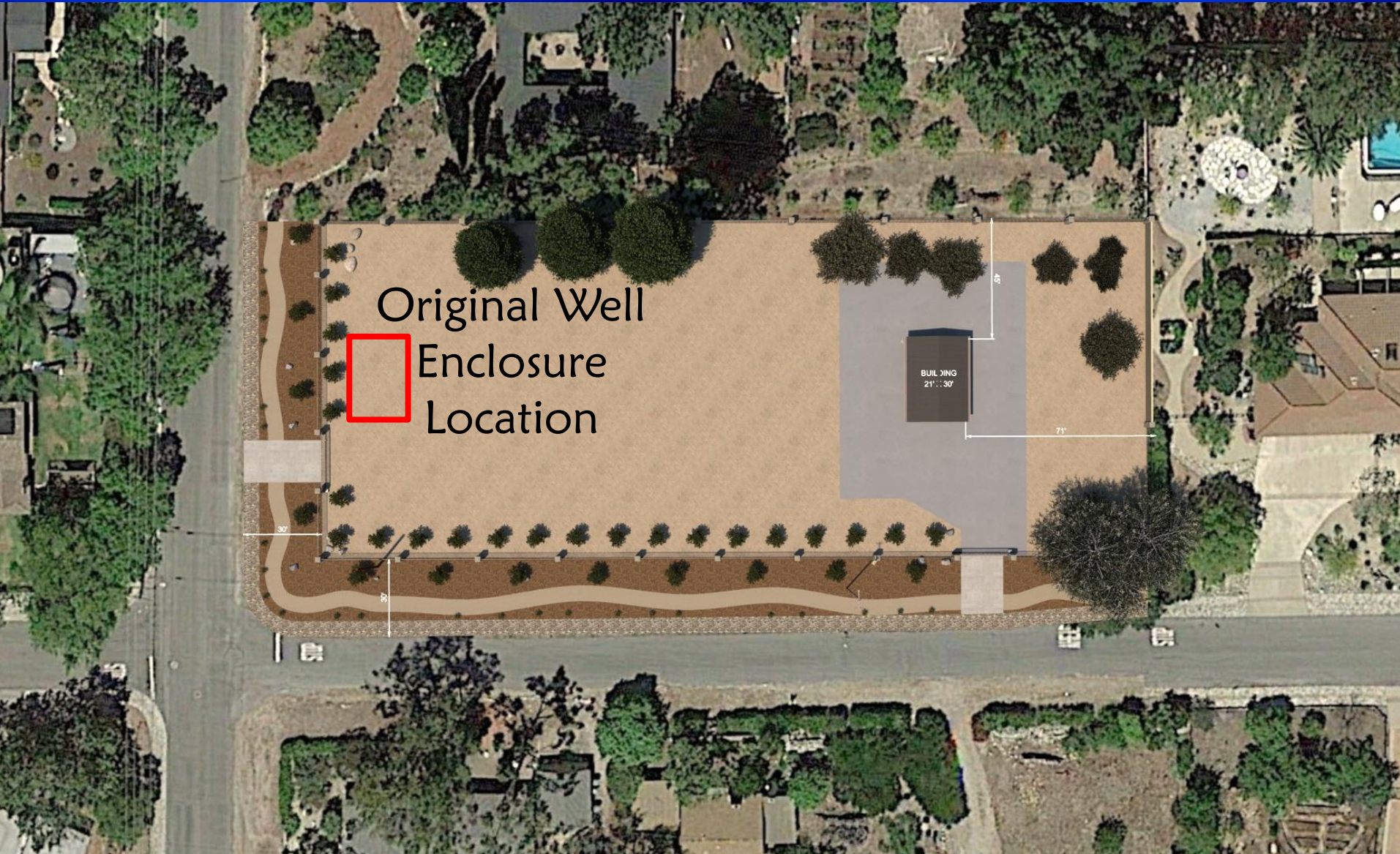
Orange Trees

Landscaping Concepts

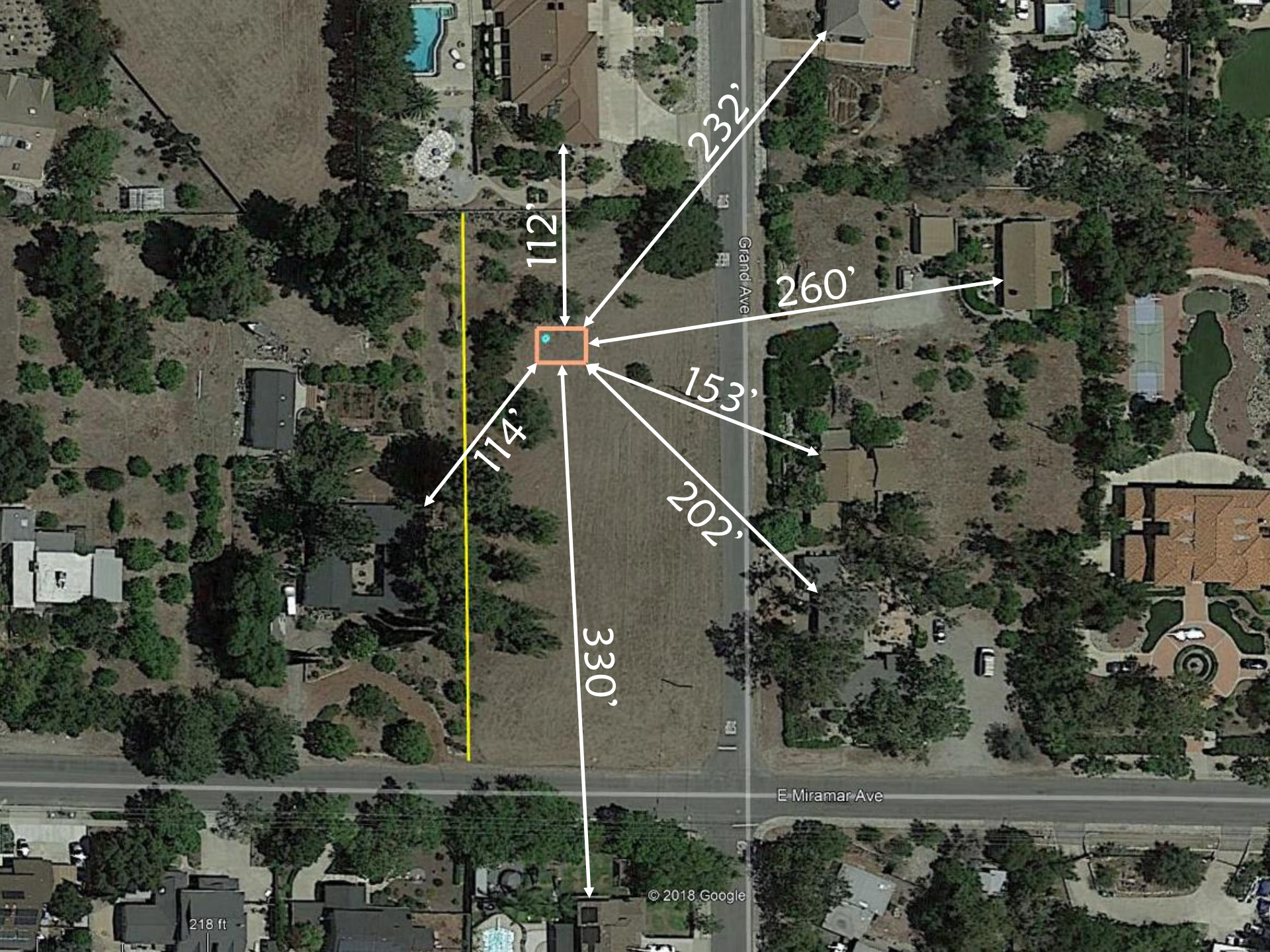


Avocado Trees

Miragrand Well Rendering



Aerial View



Grand Ave

E Miramar Ave

© 2018 Google

218 ft

112'

232'

260'

153'

202'

330'

114'

Miragrand Well – Aerial View



Well Enclosure
Building
(~21'x30')

Google Earth

Miragrand Well Rendering



View @ Grand & Miramar Avenue

Miragrand Well Rendering



View Looking North on Miramar Avenue

Miragrand Well Rendering



View Looking Northwest on Grand Avenue

Miragrand Well Rendering



Grand Avenue

Miramar Avenue

Miragrand Well Rendering



Aerial View Looking Northwest

QUESTIONS & COMMENTS